

# SWOFFORD CAREER CENTER

[www.swofford.k12.sc.us](http://www.swofford.k12.sc.us)

The mission of Swofford Career Center is to develop responsible, cooperative, productive, life-long learners by interacting with community and industry to provide a secure and challenging learning environment which promotes individual abilities.

5620 Highway 11  
Inman, South Carolina 29349-8869  
Phone 864.592.2790

Scott Simpkins, Assistant Director  
[scotts@Swofford.k12.sc.us](mailto:scotts@Swofford.k12.sc.us)

Dr. Jackie Cooley-Finger, Guidance Counselor  
[jackiec@Swofford.k12.sc.us](mailto:jackiec@Swofford.k12.sc.us)

Lisa Carlton, Placement Coordinator  
[lisac@Swofford.k12.sc.us](mailto:lisac@Swofford.k12.sc.us)

TITLE IX STATEMENT – Swofford does not discriminate on the basis of sex, race, age, color, creed, handicap, religion or veteran status in the provision of educational opportunities or employment opportunities and benefits in compliance with Title IX of the Education Amendment Act of 1972 and Section 504 of the Rehabilitation Act of 1972. Title IX and Section 504 coordinators may be reached through: District One office (121 Wheeler St., Campobello, SC 29322 – Phone 864 472 2846. Title IX – Dr. Harrison Goodwin, Section 504- Dr. Trish Beason); or District Two office (4606 Parris Bridge Rd., Boiling Springs, SC 29316 – phone – 864 578 0128. Title IX – Brantley Enloe, Section 504 Dr. Nancy Turner).

DECLARACIÓN DEL TÍTULO IX – H. B. Swofford no se discrimina basado en sexo, raza, edad, color, credo, discapacidad, religión, o status de veterano en proveer oportunidades educativas o oportunidades de empleo y beneficios de acuerdo con Título IX Título 4 de Las Enmiendas Educativas de 1972 y Sección 504 de la Ley de la Rehabilitación de 1973. Se puede comunicarse con los Coordinadores del Título IX y Sección 504 por: Oficina Central Administrativa del Primer Distrito: (121 Wheeler St., P. O. Box 218, Campobello, SC 29322 – teléfono 864 472 2846. Título IX – Dr. Harrison Goodwin, Sección 504 – Dr. Trish Beason); o Oficina del Segundo Distrito (4606 Parris Bridge Rd., Boiling Springs, SC 29316 – teléfono 864 578 0128. Título IX – Brantley Enloe, Sección 504 – Dr. Nancy Turner)

# TABLE OF CONTENTS

Career Clusters .....	3
Computer Science Unit Graduation Requirements .....	3
Enrollment Information.....	4-5
<b>Programs:</b>	
Automotive Collision Repair .....	6
Automotive Mechanical Technology.....	7
Building Construction .....	8
Commercial Graphics .....	9
Computer Systems Technology.....	10
Cosmetology .....	11
Electricity.....	12
Engineering Drafting And Design.....	13
Health Science Technology .....	14-15
Horticulture Sciences.....	16
Machine Tool Technology .....	17
Multimedia Production .....	18
Welding.....	19
Class Schedule.....	20

# COURSES BY CLUSTER

## Agriculture, Food and Natural Resources

- Golf and Landscape Turf Management
- Greenhouse/Nursery Operation
- Landscape Design Construction and Maintenance
- Introduction to Ornamental Plants and Turf

## Architecture and Construction

- Introduction to Building Construction
- Building Construction Advanced I
- Building Construction Advanced II
- Introduction to Electricity
- Residential Electricity
- Industrial Electricity

## Arts and Humanities

- Introduction to Engineering Drafting and Design
- Engineering Drafting and Design Advanced I
- Engineering Drafting and Design Advanced II
- Introduction to Commercial Graphics
- Graphic Arts and Design I
- Graphic Arts and Design II
- Introduction to Video Production
- Video Production II
- Animation and Design

## Health Science

- Health Science Technology I
- Health Science Technology II
- Introduction to Health Science Technology
- Certified Nursing Assistant

## Human Services

- Cosmetology I-A
- Cosmetology I-B
- Cosmetology II-A
- Cosmetology II-B

## Information Technology

- Computer System Technology I
- Computer System Technology II

## Manufacturing

- Gas Metal Arc Welding (GMAW/MIG)
- Gas Tungsten Arc Welding
- Introduction to Machine Tool Technology
- Machine Tool Technology Advanced I
- Machine Tool Technology Advanced II
- Oxyacetylene Welding (OAW)
- Shielded Metal Arc Welding (SMAW)

## Science, Technology, and Engineering

- Introduction to Engineering Drafting and Design
- Engineering Drafting and Design Advanced I
- Engineering Drafting and Design Advanced II
- Introduction to Machine Tool Technology
- Machine Tool Technology Advanced I
- Machine Tool Technology Advanced II

## Transportation, Distribution, and Logistics

- Introduction to Automotive Collision Repair
- Automotive Collision Repair Advanced I
- Automotive Collision Repair Advanced II
- Introduction to Automotive Mechanical Technology
- Automotive Mechanical Technology Advanced I
- Automotive Mechanical Technology Advanced II

# COMPUTER SCIENCE UNITS

- Animation and Design
- Computer Science Technology I
- Computer Science Technology II
- Graphic Arts and Design I
- Introduction to Engineering Drafting and Design

- Engineering Drafting and Design Advanced I
- Engineering Drafting and Design Advanced II
- Introduction to Commercial Graphics
- Graphic Arts and Design II
- Introduction to Video Production

# GENERAL INFORMATION

## General Information

Courses at Swofford Career Center are open to all students enrolled in the 10th, 11th, and 12th grades at Landrum and Chapman High Schools in Spartanburg County School District One and Chesnee and Boiling Springs High Schools in Spartanburg County School District Two. Enrollment for each program is limited. Admission priorities will be determined by grade level for each course. To enroll in a course at Swofford, a student should receive a course request form during registration at the home high school. This form should be completed and returned to the guidance office in the high school by the designated date. Students may confer with the career center counselor prior to registration. The career center counselor, in cooperation with the high school counselor, will assist the student in recognizing goals, interests, and abilities by reviewing the student's Individual Graduation Plan (IGP).

## Special Services

Non-diploma special needs students should be assessed prior to enrolling in any course at Swofford Career Center through the Career Exploration Program. Individual Education Plans (IEP) will be developed to ensure that these students are appropriately placed and will be able to experience success in an occupational program. Non-diploma special needs students will be mainstreamed into career center courses based upon their assessments and IEP. Diploma special needs students will enroll in classes based on their career plans and grade level. A designated representative from Swofford must serve on the IEP committee before course registration is completed.

## Non-Traditional Courses

Students are encouraged to select the course in which they have an interest in pursuing as a career. This may include a non-traditional course for some students. Swofford encourages students with an interest in non-traditional classes to enroll in that course. For example, males in Cosmetology or females in Welding or Automotive Mechanical Technology.

## Fees

Due to the intense "hands-on" nature of our programs each student attending Swofford must pay \$5.00 material fee per semester. (This fee is in addition to any fees, which are charged at the home high school or required by the Swofford program.) Swofford Career Center programs which require additional fees are: Automotive Collision Repair, Cosmetology, Engineering Drafting and Design, Health Science Technology, and Welding.

## Certification and License

Swofford Career Center allows students to achieve certification and licensing through the following programs, provided the student passes an examination issued through a private, state, or national agency:

- Automotive Mechanical Technology - ASE Certification
- Cosmetology - South Carolina State Cosmetology License
- Certified Nursing Assistant - Certified Nurses Assistant Certification

# GENERAL INFORMATION

## Enrollment Information

Enrollment questions will be resolved by considering the following: career plans, grade level, academic performance, attendance record, and disciplinary history. As a last resort, curriculum may be redesigned to meet student needs. Swofford does not deny access to any program. However, due to over enrollment a student may not receive his/her first choice. The Director of the Center, with the approval of Superintendents of Districts One and Two, will deal with unique questions involving enrollment.

## Honors Courses

Courses are scheduled morning and afternoon sessions. Each course carries two units of high school elective credit per semester. All courses are semester courses. Credits for most courses carry normal weight for grade point averaging. The following final level courses carry honors weight when calculating the student's GPA: Health Science Technology II, Engineering Graphics Advanced II, and Animation and Design.

## Articulation

Articulation agreements allow Swofford students to be assessed for exemption credits at Spartanburg Community College. Students in the following programs are eligible to participate in articulation: Electricity, Automotive Mechanical Technology, Engineering Graphics Technology, Health Science Technology, Horticulture Sciences, Machine Tool Technology, Welding, Commercial Graphics, and Computer Systems Technology.

## Dual Enrollment

Dual enrollment provides an opportunity for career center students to enroll in college courses offered by Spartanburg Community College prior to high school graduation. Successfully completed dual enrollment courses may be transferred to any of the sixteen technical colleges within the South Carolina Technical College System. Spartanburg Community College and Swofford Career Center offer dual enrollment in the area of Health Science Technology.

## Cooperative Education

Cooperative Education (co-op) is designed to give students in an occupational program an opportunity to gain on-the-job experience while attending school. The program is a 'cooperative' effort among the student, employer, parents, teacher, and school. Students usually start co-op in the second year of a two-year program. The employer assigns a training sponsor to ensure that the students receive proper training. A training plan is developed to assist in the training of skills and competencies. The teacher and school officials monitor the progress of the student. This is done in cooperation with the sponsor. The employer has the opportunity to train and develop a future employee. Co-op sponsors employ many co-op students upon high school graduation. Cooperative Education is a great opportunity for an employer to evaluate, train, and recruit future employees.

# AUTOMOTIVE COLLISION REPAIR

Everywhere you look today someone is customizing a street rod, hot rod, NASCAR race car, or just upgrading the looks and paint on their old car. In Auto Collision Repair the student will learn the correct procedures needed to repair damaged vehicles. These procedures include everything from good old elbow grease to a state of the art laser frame alignment system. Painting is done in a modern downdraft paint booth to produce the highest quality finishes in the business. Students must purchase a paint respirator.

## Introduction to Automotive Collision Repair

**Grades:** 10-12

**Prerequisite:** None

This introductory course includes training in the areas of metal straightening, MIG welding, plastic repair, and detailing. Basic repair techniques and work safety are emphasized as students learn to repair, replace, adjust and install trim and accessories. Students also learn to research and purchase used vehicles for quality repair.

## Automotive Collision Repair Advanced I

**Grades:** 10-12

**Prerequisite:** Introduction to Automotive Collision Repair

This course offers advanced study of the automotive repair service through work in the lab on metalworking, panel replacement, basic body alignment skills, refinishing, painting, and detailing. The measuring, pulling, and straightening of collision cars is studied.

## Automotive Collision Repair Advanced II

**Grades:** 10-12

**Prerequisite:** Automotive Collision Repair Advanced I

The study of automotive repair is covered in this course through advanced projects. Students will enhance their skills in the areas of problem solving, estimating repair cost, glass installation, and body and frame alignment. Students learn to mix paint to match manufacturer specifications and apply paint in the downdraft paint booth.



## CAREER OPPORTUNITIES

Auto Body Technician

Frame Technician

Insurance Adjuster

Automotive Painter

Part Recycler

Shop Owner

Welder

# AUTOMOTIVE MECHANICAL TECHNOLOGY

The Automotive Mechanical program provides basic skill training for entry-level positions in the automotive industry. Instruction follows the ASE standards of professionalism and reinforces those standards. Students perform actual work on vehicles and vehicle systems incorporating safety practices, tool and equipment usage, computer skills, and basic shop math. Swofford Career Center is an Automotive Service Excellence/National Automotive Technical Education Foundation, Inc. (ASE/NATEF) certified training center.

## Introduction to Automotive Mechanical Technology

**Grades:** 10-12

**Prerequisite:** None

This course acquaints students with introductory level automotive job skills. Students study industry wide career opportunities, safety practices, tool and equipment care and use, and communications and information systems within the industry. Students then focus on the fundamentals of automotive maintenance and basic service. These include the eight major areas of the automobile: brakes, steering and suspension, electrical, engine performance, engine repair, manual transmission, automatic transmission, and heat and air conditioning.

## Automotive Mechanical Technology Advanced I

**Grades:** 11-12

**Prerequisite:** Introduction to Automotive Mechanical Technology

This program reinforces the introductory skills and increases the intensity of training in the fundamentals of electrical/electronics, brakes, and steering and suspension. The students further their understanding of battery service, starting systems, charging systems, lighting systems, and the diagnosis and repair of gauges.

## Automotive Mechanical Technology Advanced II

**Grades:** 11-12

**Prerequisite:** Automotive Mechanical Technology Advanced I

This program reinforces the introductory skills and increases the intensity of training in the fundamentals of engine repair, engine performance, and heat and air conditioning. Special emphasis is given to problem solving and teamwork as the students prepare to exit the program and enter the competitive job market and/or continue their ASE certification in other areas at the post-secondary level.



## CAREER OPPORTUNITIES

Automotive Technician

Electronics Technician

Engineer

Hydraulics Technician

Marine Engine  
Repair Specialist

Robotics Technician

Small Engine  
Repair Specialist

# BUILDING CONSTRUCTION

If you like building things and watching your creations grow from an idea to a finished product, take a look at the Building Construction program. You'll begin with hand tools as you learn the basic principles of construction and repair of wooden structures. You'll also get to work on the construction of the Swofford house, an exciting project that allows you the opportunity to build an actual finished home with wall coverings, floor coverings, plumbing, trim, and paint.

## Introduction to Building Construction

**Grades: 10-12**

**Prerequisite: None**

This course is designed to introduce the students to a range of career opportunities in the construction field. Students learn to read a tape measure and operate power tools. Students receive instruction in site preparation, framing, construction materials, applied mathematics, and blueprint reading. The construction of playhouses is a major project for the students in this class.

## Building Construction Advanced I

**Grades: 11-12**

**Prerequisites: Introduction to Building Construction**

This course offers an advanced study of building materials and methods. The students work on the beginning construction phases of the Swofford house which include blueprint reading, design, layout, flooring, framing and roofing. This course also includes instruction in estimating, interior trim, paneling and cabinetry work.

## Building Construction Advanced II

**Grades: 11-12**

**Prerequisites: Building Construction Advanced I**

Initial emphasis in this class is on finished carpentry including cabinet and furniture construction. This advanced course primarily offers students the opportunity to apply their skills to complete construction of the Swofford house. Required skills include hanging sheet rock, installing trim, painting, hanging wallpaper, installation of basic plumbing fixtures and vinyl siding, and cabinetry construction and installation.



## CAREER OPPORTUNITIES

**Builder**

**Building Inspector**

**Cabinet maker**

**Contractor**

**Drywall Installer**

**Painter and  
Paper Hanger**

**Roofer**

**Vinyl Siding Installer**

# COMMERCIAL GRAPHICS

In Commercial Graphics, students will be introduced to industry standard printing equipment to produce projects such as t-shirts, note pads, brochures, and business cards. The Introduction to Commercial Graphics class also encompasses basic digital photography. Upon completing this program, students will have proficient skills on a Macintosh computer, along with basic knowledge of graphic software.

## Introduction to Commercial Graphics

**Grades:** 10-12

**Prerequisite:** None

In this introductory class, students will learn to use digital cameras, scanners, and Macintosh computers. The graphic software used in this class includes Adobe Illustrator, Indesign, and Photoshop. Emphasis is on designing a project and taking it all the way through the commercial printing process while learning to operate standard printing equipment.

## Graphic Arts and Design I

**Grades:** 10-12

**Prerequisite:** Introduction to Commercial Graphics

The student will design and create images and logos using their creative skills to produce products related to the Commercial Graphics industry. After completing this course, the student will have an advanced knowledge of how to use graphic software and the offset printing presses to create a variety of diverse media. Emphasis is placed on design principles, color theory, and typography.

## Graphic Arts and Design II

**Grades:** 10-12

**Prerequisite:** Graphic Arts and Design I

In this advanced course, students will independently apply their ability to design, create, and complete personalized printed projects. Students will learn about creation and production of all types of print media and the industry standard computers and equipment used to produce them. After finishing this course, the students will have basic employability skills needed to enter the commercial graphics field by producing an entry-level graphic portfolio and resume.



## CAREER OPPORTUNITIES

Press Operator

Graphic Designer

Photographer

Bindery Operator

Commercial Artist

Cutter Operator

Advertising Account Manager

Screen Printer

# COMPUTER SYSTEMS TECHNOLOGY

The Computer Systems Technology program teaches students to support users in the world of computers. Students learn to maintain computer systems, solve user problems, support user applications, and provide training to users. Students learn operating systems and network concepts with a major emphasis on networking theory. The development of logical thinking, problem solving, interpersonal and communication skills are also emphasized. Another component of this program is the integration of A-PLUS certification, which requires completion of CST I and II and a certification exam.

## Computer Systems Technology I

**Grades: 10-12**

**Prerequisite: Keyboarding**

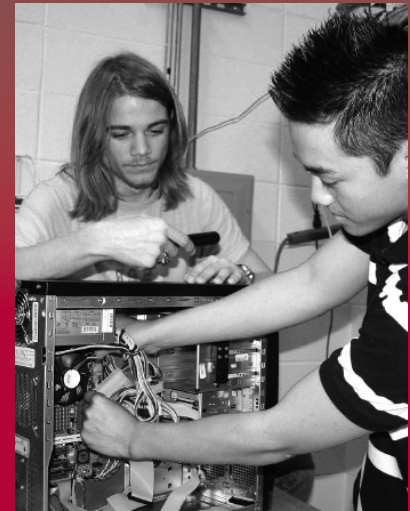
In this course, students learn the basics of microcomputer maintenance, and the diagnosing and solving of user problems. Students learn operating systems with major emphasis on networking theory. Installation of cable, connectors, and software provides hands-on experience in networking. Problem solving, teamwork, interpersonal and communication skills are emphasized. A-PLUS certification components are studied during this course.

## Computer Systems Technology II

**Grades: 11-12**

**Prerequisite: Computer Systems Technology I**

This course is a continuation of Computer Systems Technology I. Student projects become more sophisticated with a greater emphasis of real-world application. Networking and computer maintenance are emphasized. A-PLUS certification continues during this semester course. After completion, students will be eligible to take the A-PLUS exam.



## CAREER OPPORTUNITIES

Help Desk Operator

Hardware Support Technician

Information Technology Specialist

Information Systems Specialist

Network Administrator

PC Technician

Printer Repair Specialist

Software Support Technician

# COSMETOLOGY

Students are trained and prepared to take the South Carolina Cosmetology State Board Exam. Students work under the direct supervision of licensed instructors are required to purchase a cosmetology kit. The kit contains items used in both levels of the program and is the property of the student. The kit must be paid for during the registration period. In addition to regular school days, cosmetology students are required to attain additional hours in order to get the number of hours needed to take the state board exam. Upon completion of the course and passing the licensing exam, students will be registered cosmetologists in the state of South Carolina.

## Cosmetology I-A

**Grades: 11**

**Prerequisite: Completion of 10th grade**

Cosmetology I-A is a first semester course in a four-semester curriculum in which students acquire knowledge and skills in theory, practical applications, safety, professionalism, and cosmetology sciences. This class includes the study of anatomy, physiology and chemistry, along with hair care, hair design, hair cutting, and styling.

## Cosmetology I-B

**Grade: 11**

**Prerequisite: Completion of Cosmetology 1-A**

Cosmetology I-B is a second semester course in a four-semester curriculum during which students study hair care, properties of the hair and scalp, chemical texture services such as permanent waving, chemical relaxing, and hair color applications.

## Cosmetology II-A

**Grades: 12**

**Prerequisite: Completion of Cosmetology 1-A, 1-B, and 500 required State Board Hours**

Cosmetology II-A is a third semester course in a four-semester curriculum in which students will acquire an advanced level of knowledge and skills in all phases of Cosmetology and in pre-board exam.

## Cosmetology II-B

**Grade: 12**

**Prerequisite: Cosmetology II-A**

Cosmetology II-B is the final course in the program in which seniors will acquire an advanced level of knowledge in safety practices and the business side of cosmetology. The curriculum emphasizes skills in gaining employment and managing a salon. The students will prepare for the South Carolina Cosmetology state board exam.



## CAREER OPPORTUNITIES

Hair Designer

Image Consultant

Make-Up Artist

Nail Technician

Platform Artist

Retail Specialist

Salon Owner

Session Stylist

Skin Care Specialist

Spa Owner

# ELECTRICITY

The Electricity program provides a fun, learning environment where you can work as a team player. Under the instruction of a licensed electrician, students wire houses and read building blueprints. Residential and commercial electrical skills are taught. These skills include installation of lights, switches, outlets, and bending of conduit. Power and hand tools are used daily. Students will work on many hands-on outside projects, as well as wiring playhouses and the house constructed by Swofford students.

## Introduction to Electricity

**Grades: 10-12**

**Prerequisite: None**

This semester is an overall introduction to all types of electrical components and is designed to prepare students to perform entry-level electrical tasks. Students study fundamentals of electricity and safety practices used in industry. Specific hands-on skills introduced are how to install electrical panels, lighting circuits, and conduit. Application of math skills are used to determine wire sizes, fuses, and circuit loads.

## Residential Electricity

**Grades: 10-12**

**Prerequisite: Introduction to Electricity**

This course teaches the student the basics of electricity in residential construction. Emphasis is placed on wiring residential and industrial buildings to local, state, and national code requirements. An ongoing project is the wiring of the house constructed by Swofford students.

## Industrial Electricity

**Grades: 10-12**

**Prerequisite: Introduction to Electricity**

This class is an advanced study of commercial and industrial electric power, wiring and motor control. Laboratory projects provide training in installation, maintenance, and repair of electrical systems. Skill development is emphasized through advanced projects which utilize transformers, Ohms law, and wire calculation. Emphasis is placed on wiring commercial and industrial sites while learning the use of test equipment and the National Electrical Codes.



## CAREER OPPORTUNITIES

**Building Inspector**

**Cable Installer**

**Commercial Electrician**

**Phone Installer**

**Plant Maintenance  
Supervisor**

**Residential Electrician**

# ENGINEERING DRAFTING AND DESIGN

Upon completion of the Engineering Drafting and Design program, students should be able to complete advanced engineering drawings that include assembly and sub-assembly drawings, sections, details, and primary and secondary auxiliary views. Students will also learn the process of estimating and cost analysis and the fundamentals of machine design. Basic math, geometry, and writing skills will be essential in all class projects.

## Introduction to Engineering Drafting and Design

**Grades: 10-12**

**Prerequisite: None**

Introduction to engineering graphics cover the basics of creating a technical drawing using both drafting instruments and computer-aided drafting systems. The topics covered in this course include sketching, lettering, geometric construction, dimensioning, orthographic projection, pictorial drawing, primary auxiliary views, sections, and working drawings. Basic math, geometry, and writing skills will be essential in all class projects.

## Engineering Drafting and Design Advanced I

**Grades: 10-12**

**Prerequisite: Introduction to Drafting and Design**

This course introduces the learner to a more advanced engineering environment, as well as a detailed study of mechanical and architectural projects. Advanced AutoCAD and solid modeling will be introduced. Basic math, geometry and technical writing will be essential in all class projects.

## Engineering Drafting and Design Advanced II (Honors Credit)

**Grades: 10-12**

**Prerequisite: Engineering Drafting and Design Advanced I**

After successfully completing Engineering Drafting and Design and Engineering Drafting and Design I, the learner will have the skills to complete the following tasks: design and drafting of simple projects, estimating, managing projects and perform as a valuable team player.



## CAREER OPPORTUNITIES

**Mechanical Engineer**

**Structural Engineer**

**Civil Engineer**

**Architect**

**Machine Designer**

**Tool Designer**

**Drafter**

**Project Manager**

**Estimator**

**Quality Control**

# HEALTH SCIENCE TECHNOLOGY

The Health Science Technology program integrates academic studies within specific health science courses. The program also includes a variety of work-based learning activities. Curriculum offers essential knowledge and skills that are needed by healthcare providers. Health Science students gain knowledge of leadership skills, community service opportunities, community resources, and industry partnerships. The healthcare industry employs more than 11 million workers or about 17 percent of the workforce in over 300 different health careers. Articulation credit and dual credit is available for Medical Terminology and Introduction to Health Care at Spartanburg Community College.

## Introduction to Health Science Technology

**Grades: 10-12**

**Prerequisite: None**

This class includes an overview of therapeutic, diagnostic, health informatics, support services, and biotechnology research and development pathways in health science careers. The course focuses on health careers exploration, healthcare system roles, leadership, employability, and communication skills. Students will develop a concept of health maintenance practices, safety, teamwork, and legal and ethical practices.

## Health Science Technology I

**Grades: 10-12**

**Prerequisite: Completion or present enrollment in Biology or Anatomy; Introduction to Health Science is recommended**

This course is designed to develop both academic and technical knowledge and skills necessary for transition to clinical or work-based experiences in healthcare. The foundational standards incorporate anatomy and physiology, medical terminology, communication, healthcare systems and teams, health science career research, legal and ethical practices, safety, health and wellness, cardiopulmonary resuscitation, and first aid.



## CAREER OPPORTUNITIES

**Athletic Trainer**

**Anesthesiologist**

**Biomedical Engineer**

**Chiropractor**

**Dental Assistant**

**Dental Hygienist**

**Dietician**

**Health Educator**

**Lab Technician**

**Nursing Assistant**

# HEALTH SCIENCE TECHNOLOGY

## Health Science Technology II (Honors Credit)

Grades: 11-12

**Prerequisite:** Health Science Technology I; Completion or present enrollment in Biology or Anatomy

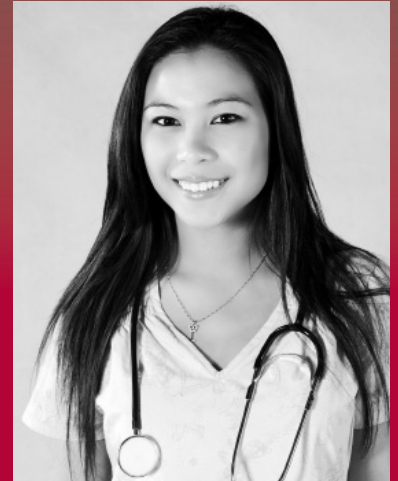
The course is designed to provide for the development of multi-occupational knowledge and skills foundational to a wide variety of healthcare professionals. The standards incorporate anatomy and physiology, diseases, therapies and care rehabilitation, prevention, systems theory, legal and ethical practices, safety standards, advanced technical skills and information technology applications. Hands-on experiences allow students them to make connections between the classroom and the healthcare industry. This course offers dual credit to Spartanburg Community College for AHS-102.

## Certified Nursing Assistant

Grade: 12

**Prerequisites:** Health Science Technology course; Anatomy or Biology; C average or above in English; Tuberculosis test (TB test)

The Certified Nursing Assistant course builds on information covered in Introduction to Health Science and Health Science Technology courses. The course is recommended for students pursuing a health related career. With the CNA certification, a student can work in a variety of healthcare facilities. Students complete class and lab work during which they learn the procedures to provide basic nursing care for the elderly. Students will participate in 40 hours of clinical time in a local nursing home facility. Students are responsible for providing their own transportation to and from the designated nursing home facility and for purchasing uniforms for clinical rotations. At the completion of this course, students are eligible to take the CNA exam. This course offers dual credit to Spartanburg Community College for AHS-101.



## CAREER OPPORTUNITIES

Perfusionist

Physical Therapist

Physician

Radiologist

Registered Nurse

Respiratory Therapist

Speech Therapist

Surgeon

Pharmacist

Surgical Technician

# HORTICULTURE SCIENCES

The Horticulture program exposes students to a wide variety of career choices. Included in this program are the operation of machinery used in industry and hands-on experiences. Students learn to identify trees, shrubs, grasses, and bedding plants and to control weeds, fungus, and insects. A major project in the spring is the annual plant sale. This project allows the students to grow, market, and sell bedding plants, shrubs, and hanging baskets. Students who complete one horticulture course can receive Horticulture 101 credit from Spartanburg Community College.

## **Introduction to Landscape Design, Construction and Maintenance**

**Grades: 10-12**

**Prerequisite: None**

This course is designed for students interested in landscaping with emphasis on plant design, construction, and maintenance. This introduction course includes the study of plant growth, soils, and nutrients. Projects in this course incorporate safety and equipment use to perform landscape installation and maintenance.

## **Greenhouse/Nursery Operations**

**Grades: 10-12**

**Prerequisite: None**

This course includes subject matter and practical experiences concerned with the culture of plants used for nursery and greenhouse businesses. Instruction includes an introduction to plant growth and soils and emphasizes identifying, growing, and maintaining nursery plants and greenhouse crops.

## **Golf And Landscape Turf Management**

**Grades: 10-12**

**Prerequisite: None**

This course is designed to provide students with information in managing and maintaining turf areas including: golf, athletic, and landscape turf. Instruction includes an introduction to plant growth and soils. Other units include turf identification, establishment, and maintenance.



## **CAREER OPPORTUNITIES**

**Agriculture/Science Education**

**Equipment Operator**

**Industrial Residential Grounds Manager**

**Forester/Wildlife Management**

**Green-keeper**

**Horticulturist**

**Landscape Designer**

**Landscaper**

**Parks and Recreation Employee**

# MACHINE TOOL TECHNOLOGY

The Machine Tool Technology Program at Swofford Career Center creates an environment with state-of-the-art industry standard equipment. The students learn basic setup, programming and operation of a variety of machines including CNC lathes, and CAD/CAM lathes. The job market is driven by BMW and a worldwide selection of industries located in the Spartanburg area. Successful students can expect to be rewarded with excellent pay and job opportunities.

## Introduction to Machine Tool Technology

**Grades: 10-12**

**Prerequisite: None**

Introduction to Machine Tool Technology is designed to enable the beginning student to develop some skill in the set-up and operation of all tools, which are basic to the machinist. The student will learn to use the metal-shaping equipment to make gears, tools, and machinery parts. The student learns functions and capabilities of engine lathes, drill presses, milling machines, grinders, cut-off saws, and radial drills.

## Advanced Machine Tool Technology

**Grades: 10-12**

**Prerequisite: Introduction to Machine Tool Technology**

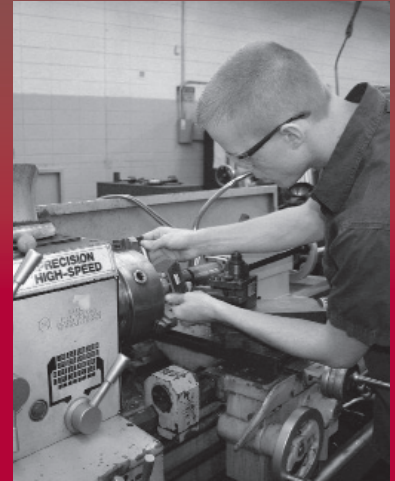
This course is designed to develop and refine student skills in the set-up and operation of all tools, which are basic to the machinist. Students learn nomenclature functions and capabilities of engine lathes, drill presses, milling machines, grinders, cut-off saws, and radial drills. The students will begin a series of projects that will demonstrate, upon completion, mastery of the machine used to make the advanced project.

## Computer Numerical Control (CNC) Programming and Operation

**Grades: 10-12**

**Prerequisites: Introduction to Machine Tool Technology**

Students participate in an advanced study of machine shop equipment and techniques. Computer-controlled milling and manufacturing processes are taught using the latest technology in the machine industry. The equipment students are trained on meets industry standards.



## CAREER OPPORTUNITIES

**CAD/CAM Operator**

**CNC Programmer**

**CNC Operator**

**Machine Tool Sales**

**Machinist**

**Maintenance Technician**

**Tool and Die maker**

**Quality Control**

# MULTIMEDIA PRODUCTION

The Multimedia program offers students the opportunity to enter the exciting field of media. Students become active participants in the production process; creating scripts, visualizing shot sequences, and shooting and editing footage in order to create finished products. In the Animation class, students use state-of-the-art software and computers to create realistic, computer-generated animation projects. Students will gain experience in object modeling and character animation, providing a rich foundation in the field.

## Introduction to Video Production

**Grades: 10-12**

**Prerequisite: Keyboarding**

This introduction course provides the foundation for success in multimedia. It focuses on video production giving basic instruction in scripting, camera operation, and editing. This course will also cover how to incorporate animation and utilize web-based formats for the distribution of information. Students will produce finished products, following the production from initial concept to final master.

## Video Production II

**Grades: 10-12**

**Prerequisite: Introduction to Video Production**

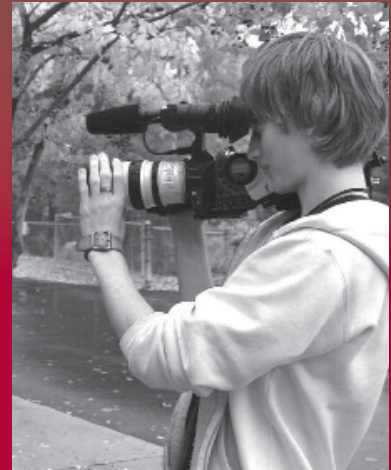
The Video Production II class builds on the foundations provided in Introduction to Video Production, allowing students to expand their training in camera work and editing. Students learn to use Final Cut Pro, a leading professional video editing program, and utilize this powerful tool to produce greenscreen effects, advanced keys, and prepare students for the workforce.

## Animation and Design

**Grades: 11-12**

**Prerequisite: Introduction to Video Production (Honors Credit)**

This course teaches the fundamentals of 3-D animation and design and will give students the knowledge and skills necessary for a career in animation. Instruction will utilize the program Lightwave, which is the industry standard for animation in television. This class includes an introduction to animation where models are created and animated according to scripted actions and behaviors.



## CAREER OPPORTUNITIES

**Camera Operator**

**Feature Animator**

**Medical Animator**

**Small Business Owner**

**Video Editor**

**Videographer**

**Web Developer**

# WELDING

The Welding classes cover the principals of welding, cutting, and basic safety procedures using welding equipment. Students receive training in blue print reading and the meaning of lines, views, dimensions, and structural shapes. Welding symbols and assembly drawings used in fabrication work are included in the training at Swofford.

## Gas Metal Arc Welding (GMAW/MIG)

**Grades: 10-12**

**Prerequisite: None**

The GMAW course provides instruction for students in using a continuous consumable wire electrode in the welding process. Students learn how to apply this type of weld with the semiautomatic machine. This process is used in the fabrication industry.

## Oxyacetylene Welding (OAW)

**Grades: 10-12**

**Prerequisite: None**

The greatest use of the oxyacetylene welding process today is in general maintenance, auto body shops, and repairing small parts where other welding processes would be too expensive. OAW is designed to prepare students to employ the oxyacetylene process to join commercial metals and alloys. Instruction also includes using the oxyacetylene flame for cutting metal, case hardening, annealing, and in any practical situation that involves joining metal parts.

## Shielded Metal Arc Welding (SMAW)

**Grades: 10-12**

**Prerequisite: None**

Alloy steel is mixed with one or more additional elements, which alters its properties and characteristics, producing steel that is greater in strength and toughness. In the SMAW course, the student learns to identify the different steels and metals along with their respective properties. Emphasis is placed upon the procedures to use in order to avoid or minimize difficulties in performing a successful weld on alloy steels and non-ferrous metals.

## Gas Tungsten Arc Welding

**Grades: 10-12**

**Prerequisite: None**

This course teaches the process of welding metals by heating them between a non-consumable tungsten electrode in all four positions – flat, horizontal, vertical, and overhead. This is used in industry for precision welding.



## CAREER OPPORTUNITIES

**Fabricator**

**Retail Sales**

**Welder**

**Welder/Fitter**

**Welding Foreman**

# CLASS SCHEDULE

## FIRST SEMESTER

### 1st and 2nd Blocks

- Introduction to Automotive Collision Repair
- Introduction to Automotive Mechanical Technology
- Introduction to Building Construction
- Introduction to Commercial Graphics
- Cosmetology I-A
- Introduction to Electricity
- Introduction to Engineering Drafting & Design
- Health Science Technology I
- Introduction to Landscape Design, Construction, and Maintenance
- Introduction to Machine Tool Technology
- Introduction to Video Production
- Shielded Metal Arc Welding

### 3rd and 4th Blocks

- Automotive Collision Repair Advanced I
- Automotive Mechanical Technology Advanced I
- Building Construction Advanced I
- Graphic Arts and Design I
- Computer System Technology I
- Cosmetology II-A
- Residential Electricity
- Engineering Drafting & Design Advanced I
- Introduction to Health Science Technology
- Introduction to Landscape Design, Construction and Maintenance
- Machine Tool Technology Advanced I
- Video Production II
- Oxyacetylene Welding

## SECOND SEMESTER

### 1st and 2nd Blocks

- Introduction to Automotive Collision Repair
- Introduction to Automotive Mechanical Technology
- Introduction to Building Construction
- Introduction Commercial Graphics
- Cosmetology I-B
- Introduction to Electricity
- Introduction to Engineering Drafting & Design
- Certified Nursing Assistant
- Greenhouse/Nursery Operation
- Introduction to Machine Tool Technology
- Introduction to Video Production
- Gas Tungsten Arc Welding

### 3rd and 4th Blocks

- Automotive Collision Repair Advanced II
- Automotive Mechanical Technology Advanced II
- Building Construction Advanced II
- Graphic Arts and Design II
- Computer System Technology II
- Cosmetology II-B
- Industrial Electricity
- Engineering Drafting & Design Advanced II (Honors Credit)
- Health Science Technology I
- Health Science Technology II (Honors Credit)
- Pharmacy Technician
- Golf and Landscape Turf Management
- Machine Tool Technology Advanced II
- Animation and Design (Honors Credit)
- Gas Metal Arc Welding

# NOTES

# NOTES

# NOTES

# NOTES